

CASE STUDY | STEP SCREEN

Municipal wastewater treatment plant Brezno, SLOVAKIA

PRETREATMENT REHABILITATION

The two bar screens in operation were obsolete and required a lot of maintenance for the operators. The plant then considered replacing them with two automatic step screens, reusing the existing conveyor belt.



Municipal WWTP Brezno, Slovakia 

REPLACEMENT PROJECT

- Technology : step screen
- Aperture lamellas : 10 mm
- Channel width: 1200 mm
- Channel depth: 1120 mm
- Capacity per screen: 500 m³/h



Old bar screens before replacement

INSTALLATION :

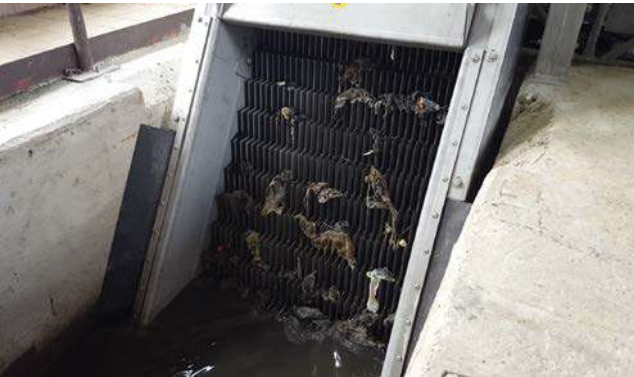


CASE STUDY | STEP SCREEN

Municipal wastewater treatment plant Brezno, SLOVAKIA

FINAL INSTALLATION:

EQUIP STEP 1200



BENEFITS:

- ➔ Adapted to the current channel size
- ➔ Reusing the conveyor belt
- ➔ Low head loss
- ➔ Working on differential water level

VIDEO IN OPERATION:



https://youtu.be/S43exVj_S3A?si=qoMZJBD72yK5MbRa